

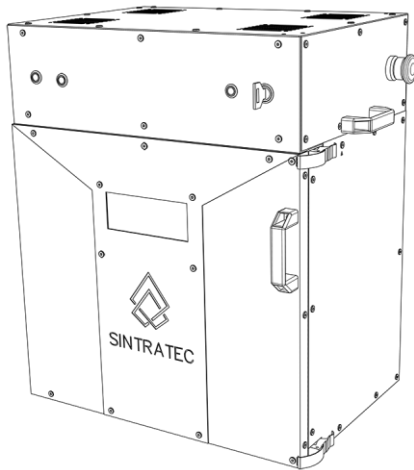
The Sintratec Kit

Quick Fact Sheet 2015 - 07



Technology

The Sintratec Kit uses a laser beam to selectively sinter powder into three dimensional objects. This opens up a new domain of applications. There are no support structures needed, therefore you can print whatever shapes you can imagine. You can even print movable assemblies and multiple nested objects all in one print.



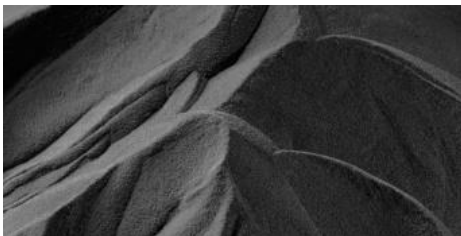
Max Print Volume	13x13x13 cm
Recommended Print Volume	11x11x11 cm
Z-Resolution	100 Micrometers
Printing Speed	1cm height per 30-60min
Outer Dimensions	
Height	59 cm
Width	56 cm
Depth	38 cm
State upon Delivery	Unassembled
Assembly Time (1 Pers.)	4 Days
Power Connection	230V or 110V AC
Peak Power Consumption	1.7 kW
Weight	29 Kg

Environment

We recommend to install the printer in an environment where powder residues do not pose a problem. A standard power connection is sufficient to operate the machine. A state of the art computer running the latest Sintratec software is required for printing. The computer can be connected to the printer via USB. A sandblaster is recommended in order to clean the printed objects properly.

Material

The main print material is a high performance polymer and allows for strong, temperature resistant, precise and durable work pieces to be printed. The manufactured parts can be used for functional prototypes in mechanically demanding applications and end products.



Min. Shipping Unit	2 Liters
Main Material	Polyamide 12
Additive	Carbon Black
Color	Antracite
Particle Size	60 Micrometers avg.
Melting Point	176 °C